

**RUSH  
WITT &  
WILSON**

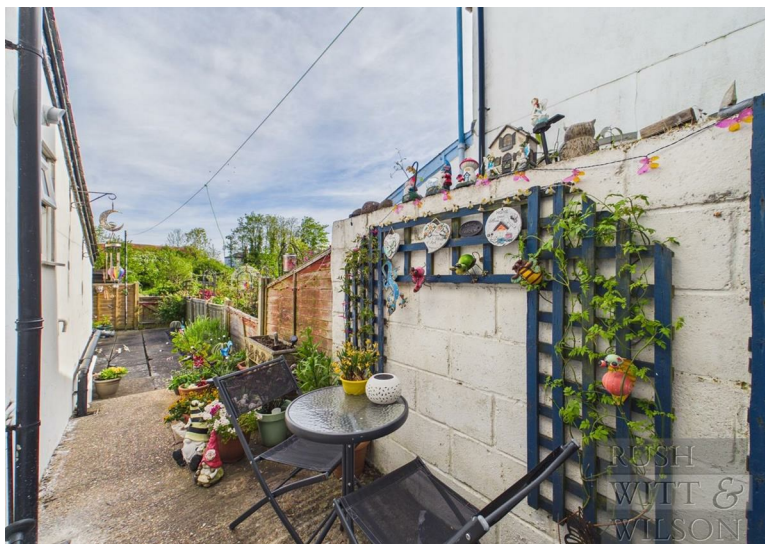


**121 South Undercliff, Rye, East Sussex TN31 7HW**  
**Guide Price £299,950 Freehold**

Rush Witt & Wilson are pleased to offer a well presented terrace house in a favoured location backing onto allotments and only a short walk from town centre and railway station. The nicely proportioned accommodation is arranged over two floors and comprises three bedrooms, living room, separate dining room, kitchen and bathroom. Low maintenance southerly facing garden to the rear. The property benefits from gas central heating and double glazing.

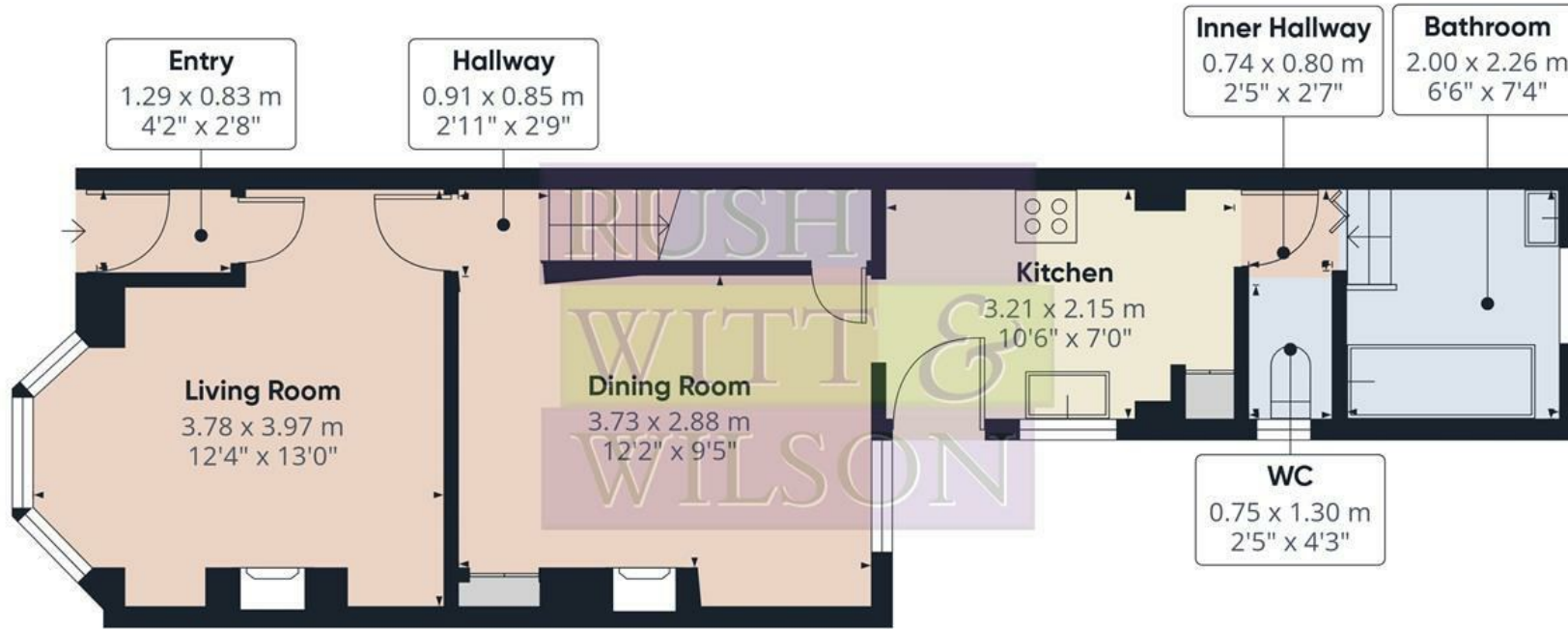
Located on South Undercliff close to the heart of Rye, an ancient Cinque Port town on the South coast, convenient for the town centre and within walking distance of the railway station. The town offers a wide range of daily amenities, the bustling high street has many specialist and general retail stores, supermarket, primary and secondary schooling, sports centre and indoor swimming pool. Rye also boasts the famous cobbled Citadel, working quayside, weekly farmers' and general markets. Beautiful undulating countryside borders the town, containing many places of general and historic interest. The railway station offers regular services to Brighton and to Ashford where there are connecting, high speed, services to London. At nearby Rye Harbour there is access, via a nature reserve, to miles of open shingle beach forming part of the stunning coastline of the Rye Bay.

For further information and to arrange a viewing please call our Rye office on 01797 224000.









Floor 0



Floor 1

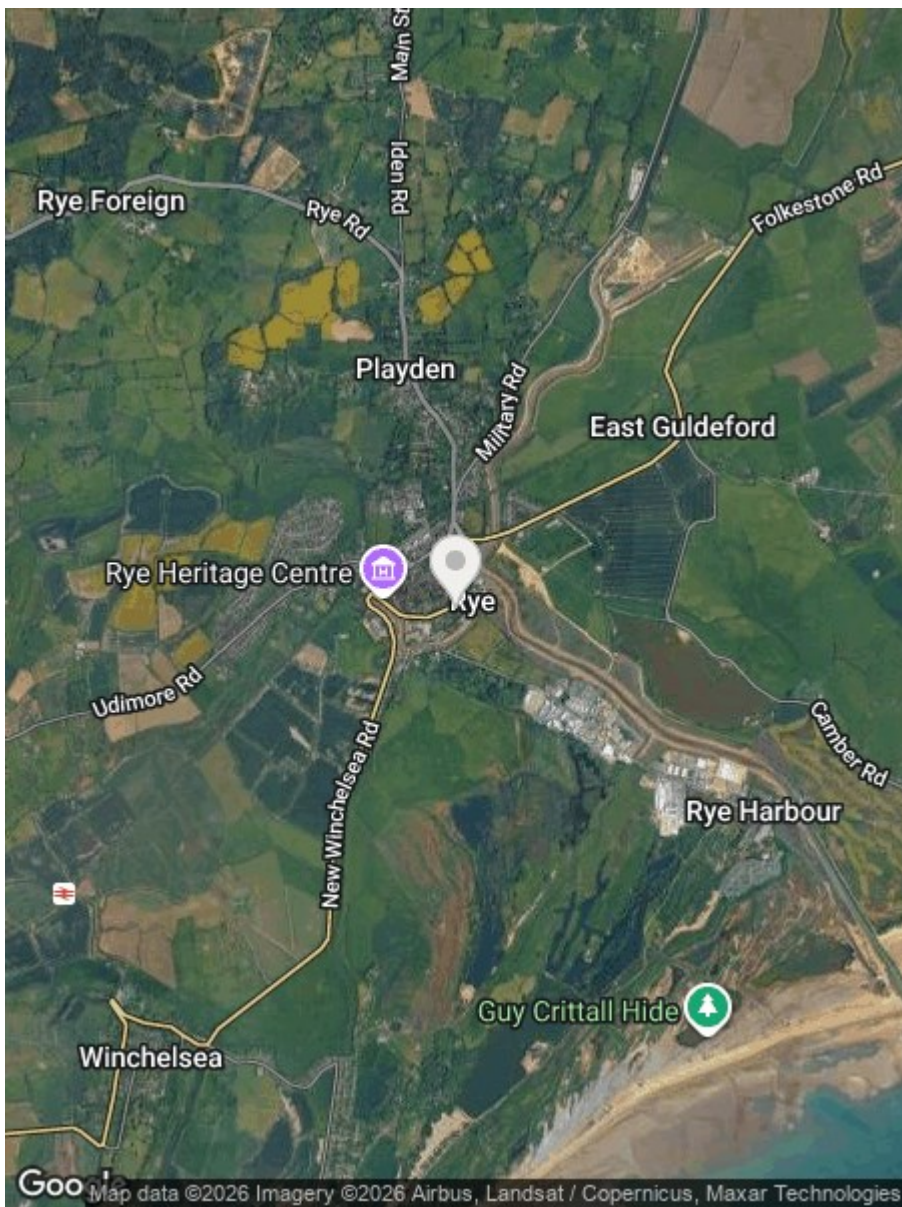


Approximate total area<sup>(1)</sup>

70 m<sup>2</sup>  
753 ft<sup>2</sup>

(1) Excluding balconies and terraces

Calculations reference the RICS IPMS 3C standard. Measurements are approximate and not to scale. This floor plan is intended for illustration only.



Energy Efficiency Rating		
	Current	Potential
<i>Very energy efficient - lower running costs</i>		
(92 plus) <b>A</b>		
(81-91) <b>B</b>		85
(69-80) <b>C</b>		
(55-68) <b>D</b>	64	
(39-54) <b>E</b>		
(21-38) <b>F</b>		
(1-20) <b>G</b>		
<i>Not energy efficient - higher running costs</i>		
<b>England &amp; Wales</b>	EU Directive 2002/91/EC	

Environmental Impact (CO <sub>2</sub> ) Rating		
	Current	Potential
<i>Very environmentally friendly - lower CO<sub>2</sub> emissions</i>		
(92 plus) <b>A</b>		
(81-91) <b>B</b>		
(69-80) <b>C</b>		
(55-68) <b>D</b>		
(39-54) <b>E</b>		
(21-38) <b>F</b>		
(1-20) <b>G</b>		
<i>Not environmentally friendly - higher CO<sub>2</sub> emissions</i>		
<b>England &amp; Wales</b>	EU Directive 2002/91/EC	

Council Tax Band - C

Fixtures and fittings: A list of the fitted carpets, curtains, light fittings and other items fixed to the property which are included in the sale (or may be available by separate negotiation) will be provided by the Seller's Solicitors.

Important Notice:

1. Particulars: These particulars are not an offer or contract, nor part of one. You should not rely on statements by Rush, Witt & Wilson in the particulars or by word of mouth or in writing ("information") as being factually accurate about the property, its condition or its value. Neither Rush, Witt & Wilson nor any joint agent has any authority to make any representations about the property, and accordingly any information given is entirely without responsibility on the part of the agents, seller(s) or lessor(s).
2. Photos, Videos etc: The photographs, property videos and virtual viewings etc. show only certain parts of the property as they appeared at the time they were taken. Areas, measurements and distances given are approximate only.
3. Regulations etc: Any reference to alterations to, or use of, any part of the property does not mean that any necessary planning, building regulations or other consent has been obtained. A buyer or lessee must find out by inspection or in other ways that these matters have been properly dealt with and that all information is correct.
4. VAT: The VAT position relating to the property may change without notice.
5. To find out how we process Personal Data, please refer to our Group Privacy Statement and other notices at <https://rushwittwilson.co.uk/privacy-policy>



Residential Estate Agents  
Lettings & Property Management



The Estate Offices Cinque Ports Street  
Rye  
East Sussex  
TN31 7AD  
Tel: 01797 224000  
[rye@rushwittwilson.co.uk](mailto:rye@rushwittwilson.co.uk)  
[www.rushwittwilson.co.uk](http://www.rushwittwilson.co.uk)